

# CIPCheck



***A fully integrated CIP control system for any industrial application, designed for quick and easy upgrade to existing systems.***

## ***Application***

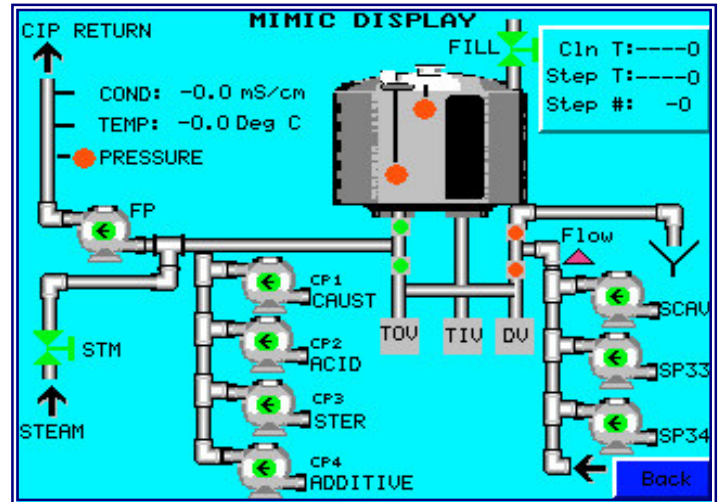
Every hygienic industrial process requires a CIP regime to provide a repeatable and guaranteed level of process hygiene. The Canongate Technology *CIPCheck* is a CIP control system that can be easily programmed for any industrial application. The *CIPCheck* provides a programmable control system with digital and analogue control along with the accountability and safety features required to meet today's safety standards.

## ***Principle***

The *CIPCheck* works by using clean programs, which are broken down into steps. Each step will perform a function and open valves / start pumps for a set period of time. Thus along with special control commands a clean program can be built up, in an easy to follow, modular fashion.

## ***Hardware Features***

- 120mm x 90mm HMI colour screen for Operator control and system configuration by engineer.
- PLC supplied with analogue and digital connectivity, via terminals, to field items.
- All hardware supplied in IP55 rated stainless steel panel with 3 sections for optimum space utilisation.
- Sonic beacon supplied, with mute button, to alert the operator to alarms.
- Emergency stop button fitted to front of panel for safety.
- Field terminals fitted to back section of the panel for easy access and item connection.
- Serial printer supplied as standard for clean reports and alarm logging.



Typical Mimic Display

## ***Software Features***

- Operator control screen specially designed for ease of use.
- System configuration is via the HMI so no need for PLC programming using a computer.
- Configuration fully flexible, allowing digital inputs and outputs to be allocated against any function.
- Two levels of log-in required for Operators and Engineers to protect the system and avoid unfriendly access.
- Automatic printouts of clean reports and faults.
- Process friendly, anti-pipeline shock software.
- Valve and Pump status screens allowing easy viewing of status with manual force/over-ride option.
- Mimic (optional extra) with pictorial representation of plant status
- Automatic trending facility for analogue values - such as temperature and caustic strength.
- Easy view of flow, pressure and chemical control status.

